



DISCORD

**DISCORD COMPANY FOR GENERAL
CONTRACTING AND REAL ESTATE INVESTMENT**



**COMPANY
PROFILE
2026**

WHO WE ARE

We are the leading "DISCORD" group of companies specialized in the field of contracting and real estate investment, where we work on construction, building, and general construction of buildings, in addition to the trade of building materials such as cement and reinforcing steel. We also own a factory for automatic concrete bricks to carry out our work with the highest quality and fast delivery.

The company's management team works in general contracting, real estate investment, real estate marketing, ownership, sale, operation and maintenance of tourist villages and hotel apartments in the Arab Republic of Egypt, and the trade of building materials (cement - reinforcing steel).





Over the past years, the company has embarked on establishing a business based on ethics, proficiency, safety and teamwork, which has enabled the team to grow in terms of serving our customers. We have continued to provide the best value in our services by selecting our human resources from specialized experts for all the works of our projects. We strive to adhere to the highest ethical standards while always considering the safety of the work environment. We constantly strive to find the best solutions that achieve the goals of our clients in the best way, while providing an aesthetic touch to our work and ensuring that all executed work has a positive impact on the user. We also carry out planning, design, implementation, and project management for all areas of our work.



OUR VISION

We aspire for the name of "DISCORD" company to be a leading name in the field of general contracting, integrated finishing, and real estate investment, in addition to our work in water and sanitation stations and networks, and general supplies.



OUR MISSION

Our mission lies in spreading the true concept of quality in our work, and providing high-quality services with which we strive to satisfy all customers and meet their aspirations. We also exert all our efforts to provide a real model of high quality through our various works and dealings.



OUR GOALS

Our goal is to enhance the quality and efficiency of all our work and to combine speed of implementation with achieving quality. The company also constantly seeks to provide continuous training to improve the capabilities of its team, to ensure the highest quality of our services and their professional implementation.



OUR SERVICES

Contracting Division:

- Construction and concrete works
- Integrated finishing works
- Electromechanical works
- Steel construction works
- Landscaping and hardscaping works
- Drinking water treatment plants
- Wastewater treatment plants
- Heavy equipment services, rental and transportation



TRADE DIVISION

- **Supply of cement**
- **Supply of reinforcement steel**
- **Supply of autoclaved aerated concrete blocks**

ORGANIZATIONAL CHART

- 1- Chairman of the Board / Mr. Abdel Moneim Ahmed Desouki
- 2- Executive Director / Eng. Amir Abdel Moneim Ahmed
- 3- Company Director / Eng. Ahmed Abdel Moneim Ahmed
- 4- Projects Director / Eng. Ashraf Abdel Raouf
- 5- Project Manager / Eng. Mohamed Ahmed Shaaban
- 6- Project Manager / Eng. Mahmoud Maghrabi
- 7- Technical Office Director / Eng. Walid Ashour
- 8- Technical Office Engineer / Eng. Ahmed Kamal
- 9- Technical Office Engineer / Eng. Islam Ahmed
- 10- Civil Engineer / Eng. Mahmoud Yasser Mohamed
- 11-Architect / Eng. Mahmoud Abdel Rahim

ORGANIZATIONAL CHART

- 12- Civil Engineer / Eng. Islam Hamid
- 13- Civil Engineer / Amr Kamal
- 14- Financial Director / Mr. Mohamed Atef
- 15- Accounts Director / Mr. Ahmed El Sayed Hamed
- 16- Contracts Director / Mr. Islam Abdel Naim
- 17- Quality and Occupational Health Director / Eng. Mr. Mohamed
- 18 Civil Supervisor
M. Gad El Rab Ahmed
- 19 Electrical Supervisor
M. Ahmed Ibrahim
- 20 Architectural Supervisor M. Ahmed Awad

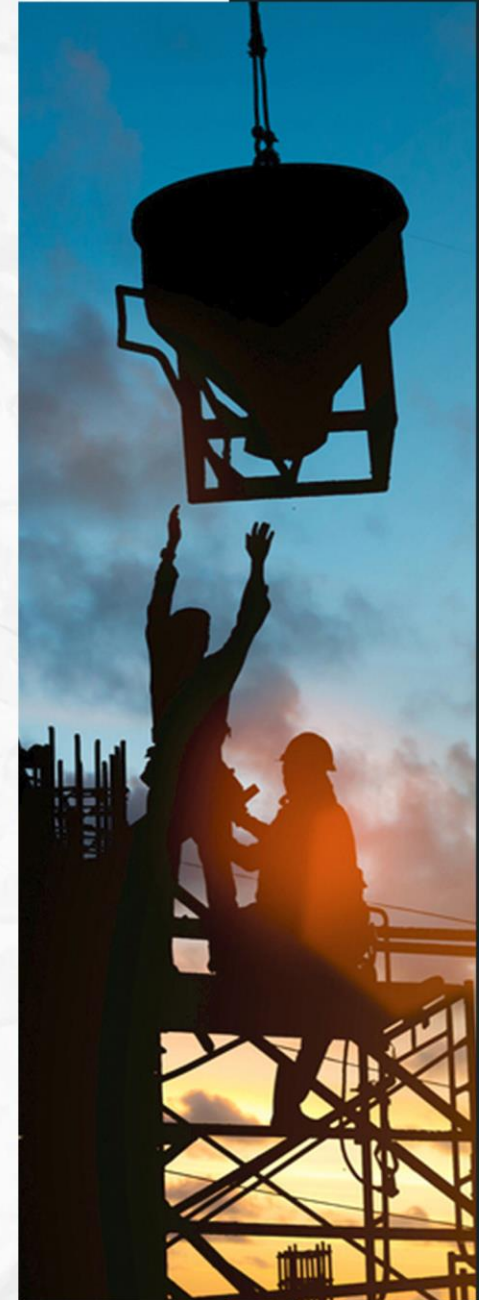
WHY **CHOOSE** US?



- Long experience in the field of contracting and real estate investment
- Distinguished and specialized administrative team
- Commitment to the highest standards of quality, safety and professional ethics
- Utilization of the latest techniques and technology in execution
- Rapid completion and on-time project delivery

OUR ACHIEVEMENTS

Over the past years, the "DISCORD" company has embarked on building an ethical, skilled, safe, and collaborative business, which has enabled the team to grow in serving our customers. We have continued to provide the best value in our services by carefully selecting human resources of expert specialists for all of our project works. We strive to adhere to the highest ethical standards while always prioritizing the safety of the work environment, and we are diligently finding the best solutions that optimally achieve our clients' objectives, providing an aesthetic touch to our work and ensuring that all executed work has a positive impact on the user.



OUR PROJECTS

We have an impressive record of executing diverse projects in the fields of construction, including residential, commercial, and industrial buildings, as well as vital facilities such as water and sewage treatment plants.

- 1- Project to construct the main gate of the portofino village with an area of 500 square meters and a height of 12 meters.
- 2- Project to construct 2 hotels in the portofino village in Marsa Alam with a total area of 3,000 square meters.
- 3- Comprehensive finishing works for 120 chalets + 20 suites + the main restaurants and reception in the portofino village in Marsa Alam.
- 4- Project to construct a hotel in the Sea World village in Al-Qusair with an area of 1,500 square meters.

The background of the slide features a dark blue gradient with silhouettes of two people in business attire shaking hands. Behind them is a whiteboard with some faint, illegible markings. The overall aesthetic is professional and corporate.

5- Project to construct villas in the Sea World village in Al-Qusair with an area of 2,200 square meters.

6- Project to construct the main generator station for the portofino village in Marsa Alam.

7- Project to construct chalets on the environmental system of load-bearing walls with rubble in the Wadi Sabara hotel in the Oasis village in Marsa Alam.

8- Project to construct a sewage treatment plant with an area of 250 square meters in the Wadi Sabara hotel in the Oasis village.

9- Project to construct a fence for the Elmo Sun Rise village.

10- Efficiency upgrade and renovation of facilities and buildings in the Elmo Sun Rise village in Marsa Alam.

11- Construction works for residential buildings in the cities of Safaga and Marsa Alam.

12- Project to build the reception building and main restaurant for Harmony Makadi Village with an area of 2,500 square meters.

13- Project to build a food court building in Harmony Makadi Village with an area of 1,600 square meters.

14- Project to build a tourist resort in Marsa Alam with an area of 7,000 square meters, managed by the Marina Golden Hotels Group.

15- Project to build a tourist resort in Safaga (Arizona Soma Bay) with an area of 3,000 square meters, owned by Al-Desouky Building Materials Trading Company.



The background of the slide features a dark blue gradient with silhouettes of two individuals shaking hands. The person on the left is a woman with short hair, and the person on the right is a man. They are positioned in front of a large window with vertical bars, suggesting a professional or business setting. The overall tone is formal and celebratory.

16- Soma Bay Gym Project

Construction of a sports center (gym) on a 2000 square meter plot at Soma Bay Resort

17- Tennis Academy – Soma Bay

Construction and finishing of the Olympic Tennis Academy at Soma Bay Resort

18- Sports Arena – Soma Bay

Construction and finishing of the Olympic tennis courts at Soma Bay Resort

19- Boiler Room – Soma Bay

Construction of the boiler room building for the Olympic swimming pool at Soma Bay Resort

The background of the slide features a dark, blue-toned image showing the silhouettes of two individuals, likely a woman on the left and a man on the right, standing and looking at a document or laptop together. The scene is dimly lit, with light coming from behind them, creating a professional and collaborative atmosphere.

20- Marina Renovation – Soma Bay
Restoration, renovation, and painting works at Soma Bay Marina, including 20,000 square meters of paint.

21- Main Gate – Soma Bay
Construction of the main gate at Soma Bay Resort.

22- Bandar – Soma Bay
Construction and finishing of 3 staff accommodations at Bandar Soma, comprising 140 rooms, plus 300 cluster buildings for the two workers.

23- Wadi Jabal Villages – Soma Bay
Construction of 5 villas in the Wadi Jabal project at Soma Bay Resort.

24- Bandar Al Jadida – Soma Bay

- Construction and finishing project for two hotels with 250 rooms and a total area of 5,000 square meters.**
- Construction project for the main restaurant of the Soma Bay resort in the Bandar Soma Heights area.**

25- Aqua Titanic – Pearl

Construction project for two pump rooms for swimming pools and the aqua park, plus the construction of the main aqua park in Titanic Pearl Village.

26- Main Reception – Titanic Pearl

Construction project for a main reception building with an area of 4,000 square meters in Titanic Pearl Village.

27- Main Reception – Titanic Paradise

Construction project for a main reception building with an area of 3,500 square meters, plus the complete finishing of the village, which includes 500 rooms, plus the construction of 17 swimming pools in Titanic Paradise Village.

ESTABLISHING THE PORTO FINO MAIN PORTAL



ESTABLISHING A TOURIST HOTEL IN THE VILLAGE OF PORTO FINO, MARSAA ALAM



FINISHES OF THE MAIN RESTAURANT, PORTO FINO VILLAGE, MARSAA ALAM



LANDSCAPE WORKS AT PORTO FINO HOTEL, MARSALA ALAM



ESTABLISHING A TOURIST HOTEL IN ALBATROS SEA WORLD VILLAGE, EL QUSEIR



CONSTRUCTION OF ALBATROS SEAWORLD VILLAGE VILLAS IN EL QUSEIR



ESTABLISHMENT OF THE GENERATOR STATION IN PORTO FINO VILLAGE, MARSA ALAM



CONSTRUCTION OF CHALETS AT SABARA MARSA ALAM HOTEL



ESTABLISHMENT OF A TREATMENT PLANT FOR THE SABARA MARSALA ALAM HOTEL



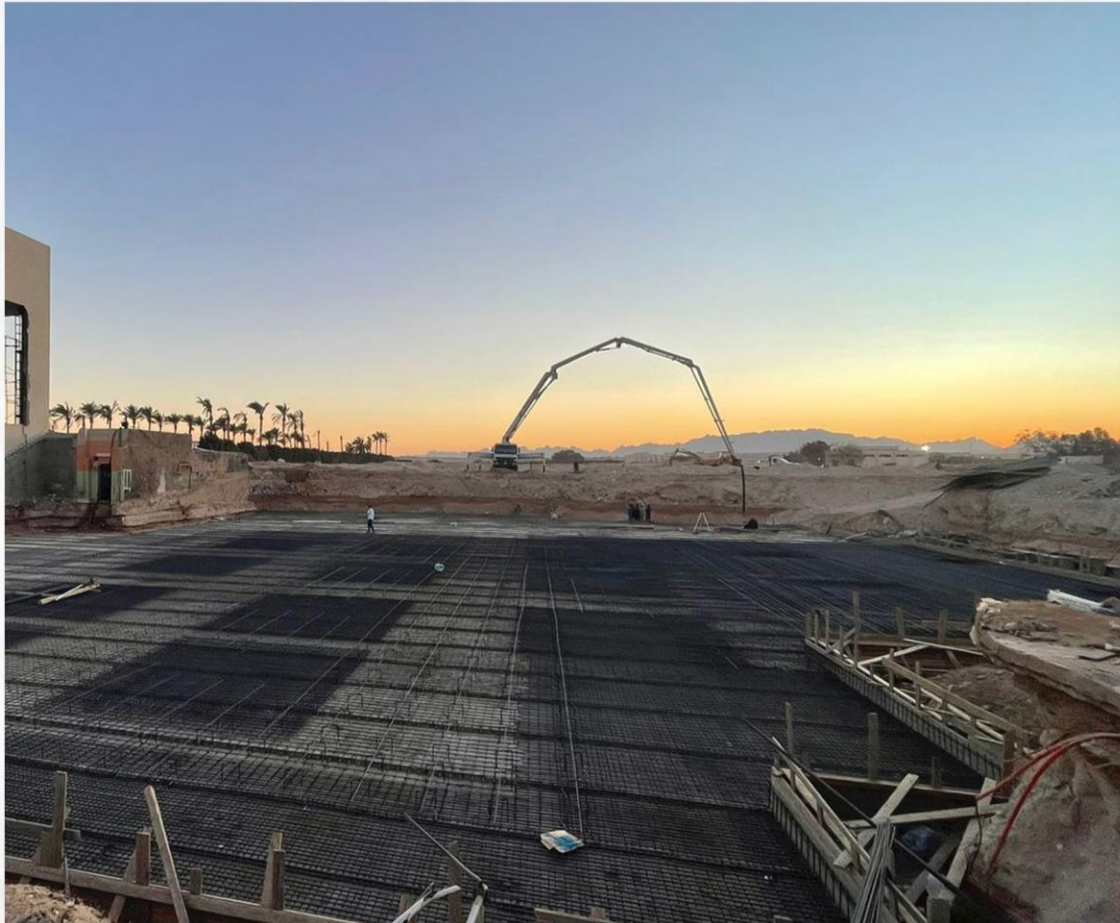
CONSTRUCTION OF A WALL FOR THE ELMO SUNRISE MARSALA ALAM HOTEL



HARMONY VILLAGE ALBATROS MAKADI RECEPTION PROJECT



CONSTRUCTION OF A MAIN RECEPTION BUILDING AND RESTAURANT AT HARMONY MAKADI HOTEL



CONSTRUCTION OF THE FOOD COURT BUILDING IN HARMONY MAKADI VILLAGE



FOOD COURT BUILDING, GREEN HARMONY, ALBATROSS, MAKADI



ESTABLISHING A TOURIST RESORT, MARINA GOLDEN HOTEL, MARSAA ALAM



INCREASING THE EFFICIENCY OF SUNRISE MARSALA ALAM BUILDINGS



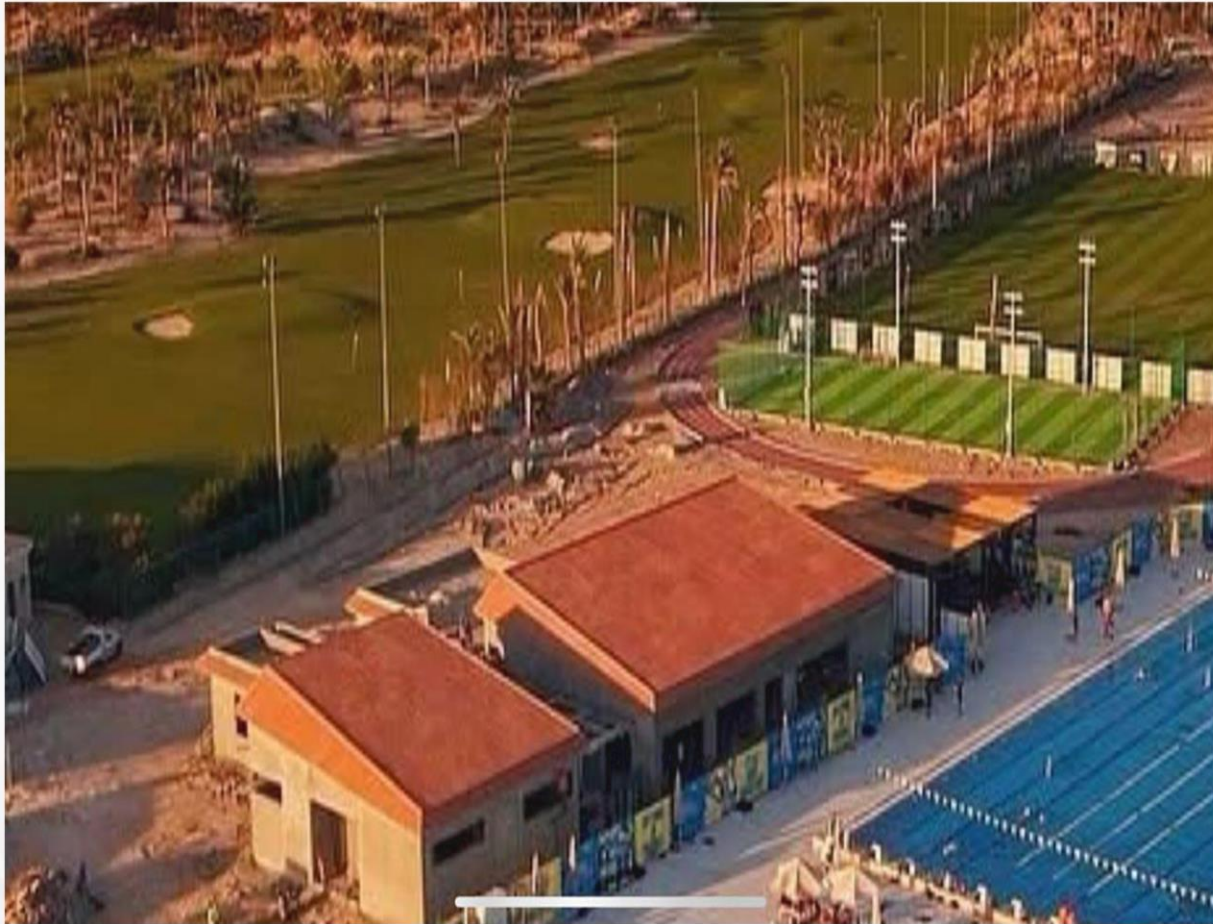
ESTABLISHING A TOURIST RESORT, THE ARIZONA SOMA BAY HOTEL



SOMA BAY CLUB - GYM PROJECT



SOMA BAY CLUB - GYM PROJECT



TENNIS ACADEMY SOMA BAY



TENNIS ACADEMY SOMA BAY



TENNIS ACADEMY SOMA BAY



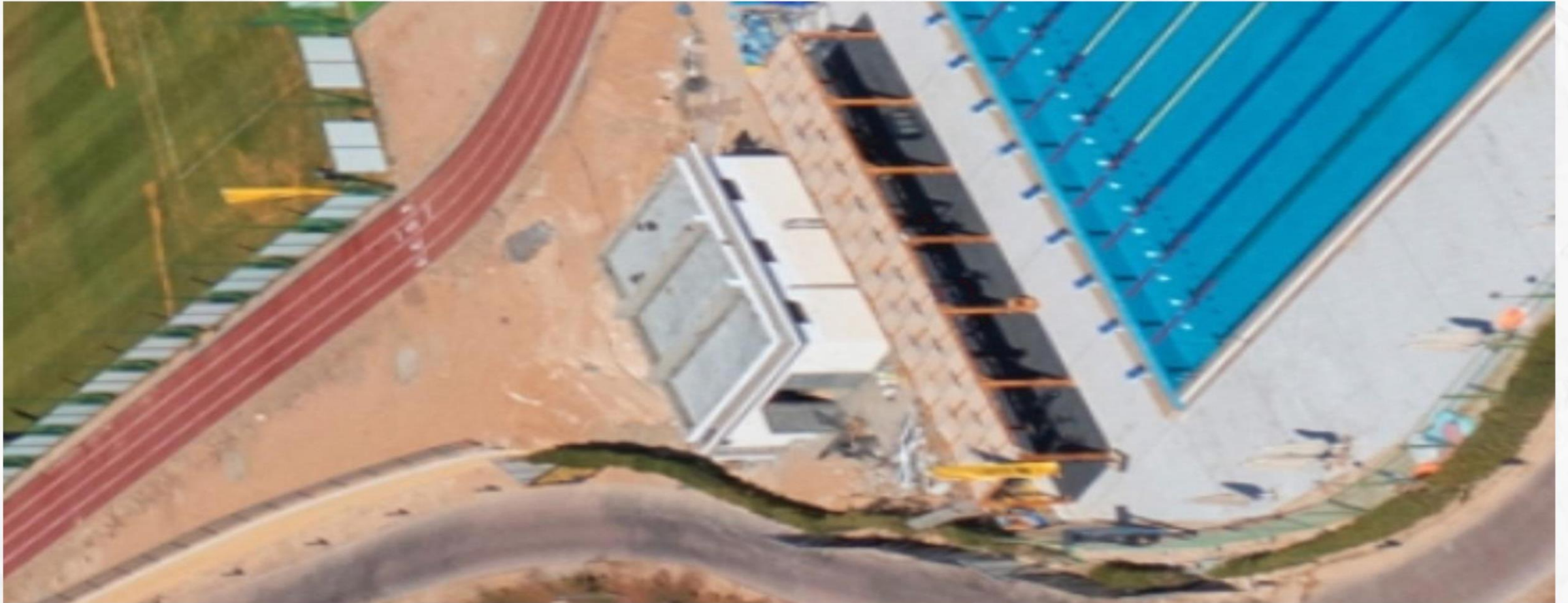
SPORTING ARENA SOMA BAY



SPORTING ARENA SOMA BAY



BOILER ROOM SOMA



BOILER ROOM SOMA



MARINA RENNOVATION



MARINA RENNOVATION



MAIN GATE SOMA BAY



MAIN GATE SOMA BAY



BANDER SOMA BAY



BANDER SOMA BAY



BANDER SOMA BAY



WADI JEBAL VILLAGES SOMA BAY



WADI JEBAL VILLAGES SOMA BAY



NEW BANDER SOMA BAY



NEW BANDER SOMA BAY



NEW BANDER SOMA BAY



NEW BANDER SOMA BAY



NEW BANDER SOMA BAY



AQUA TITANEK BEARL



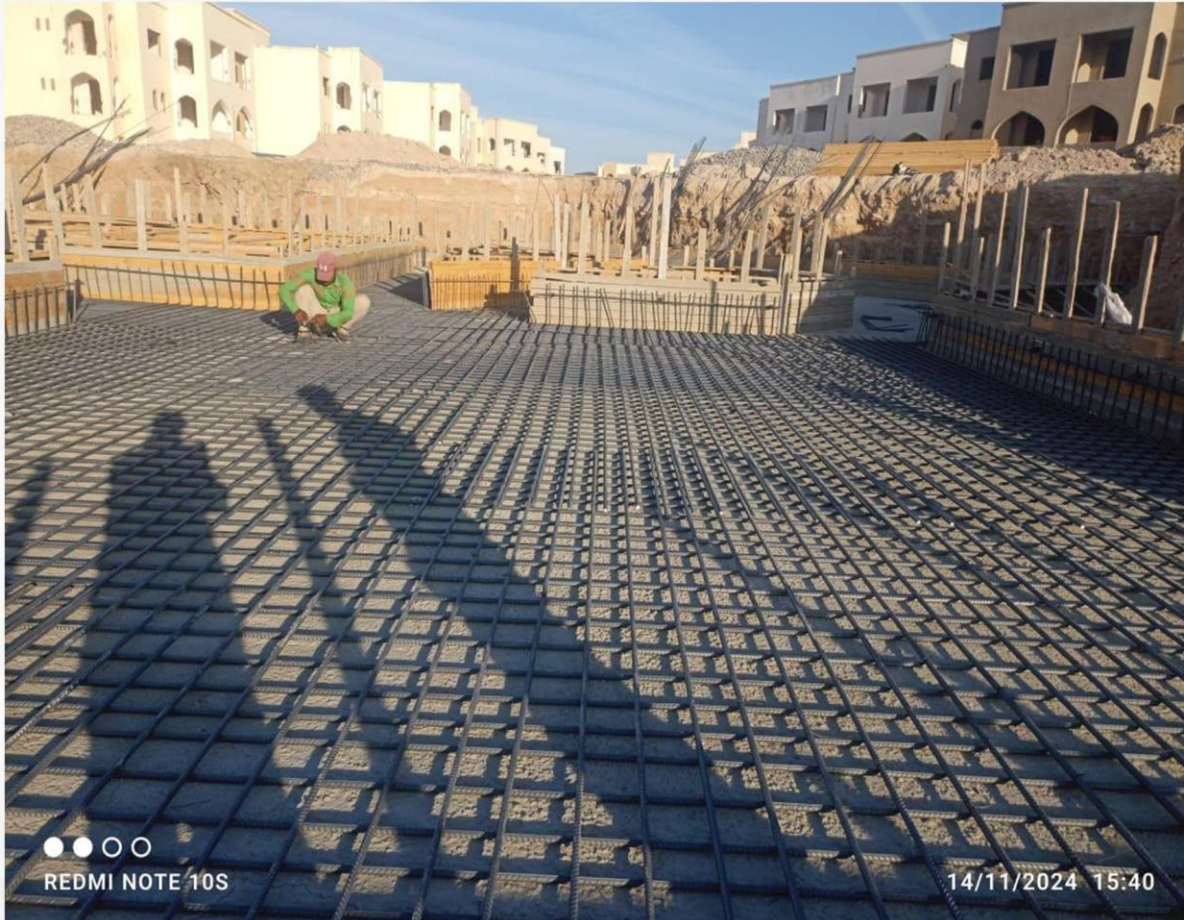
AQUA TITANEK BEARL



MAIN RECEPTION TITANEK PEARL



MAIN RECEPTION TITANEK PEARL



MAIN RECEPTION TITANEK PARADISE



MAIN RECEPTION TITANEK PARADISE



MAIN RECEPTION TITANEK PARADISE

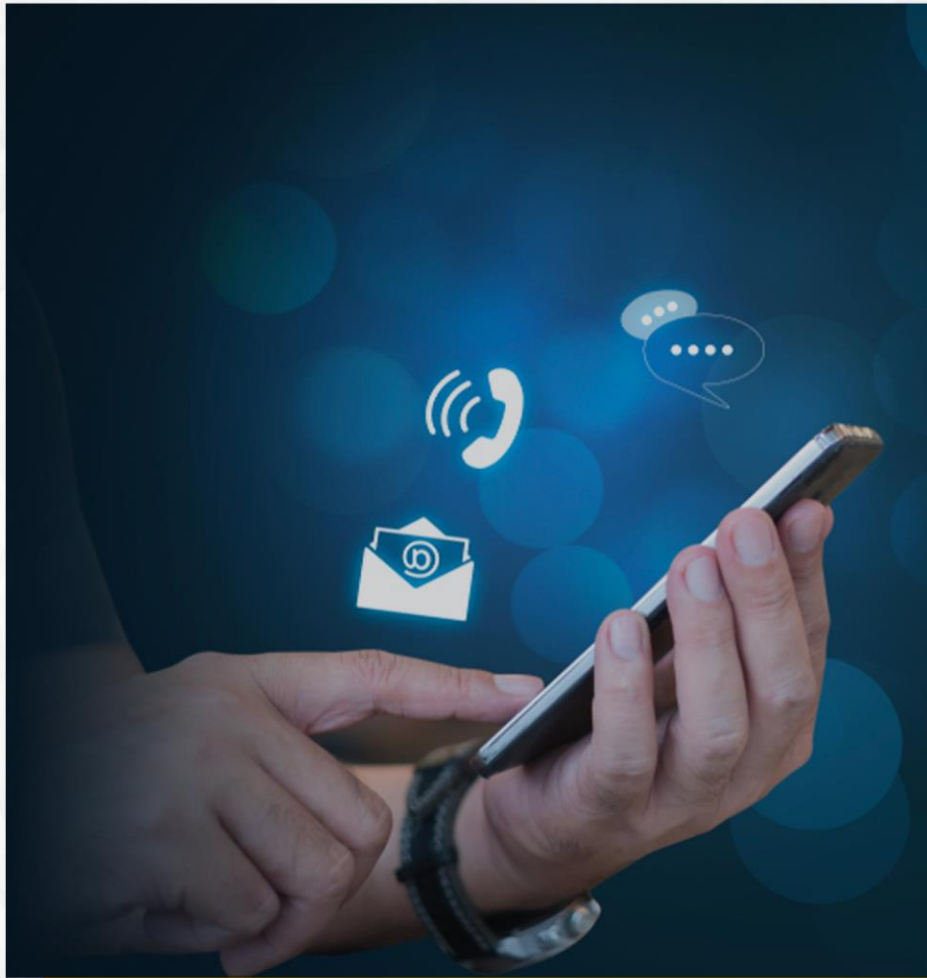


MAIN STAFF RESTAURANT BUILDING, SOMA BAY



OUR CLIENTS





DISCORD

**DISCORD COMPANY FOR GENERAL
CONTRACTING AND REAL ESTATE INVESTMENT**

**CONTACT
US**

ADDRESS : RED SEA, SAFAGA, MAIN STREET, IN FRONT OF THE GIRLS' SECONDARY SCHOOL

PHONE : 01000015305 - 01000119778 - 01000230073 | EMAIL: DISCORD.CONTRACTOR@GMAIL.COM



THANK
YOU!